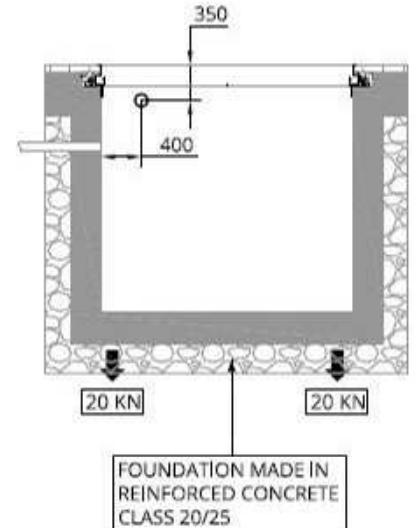
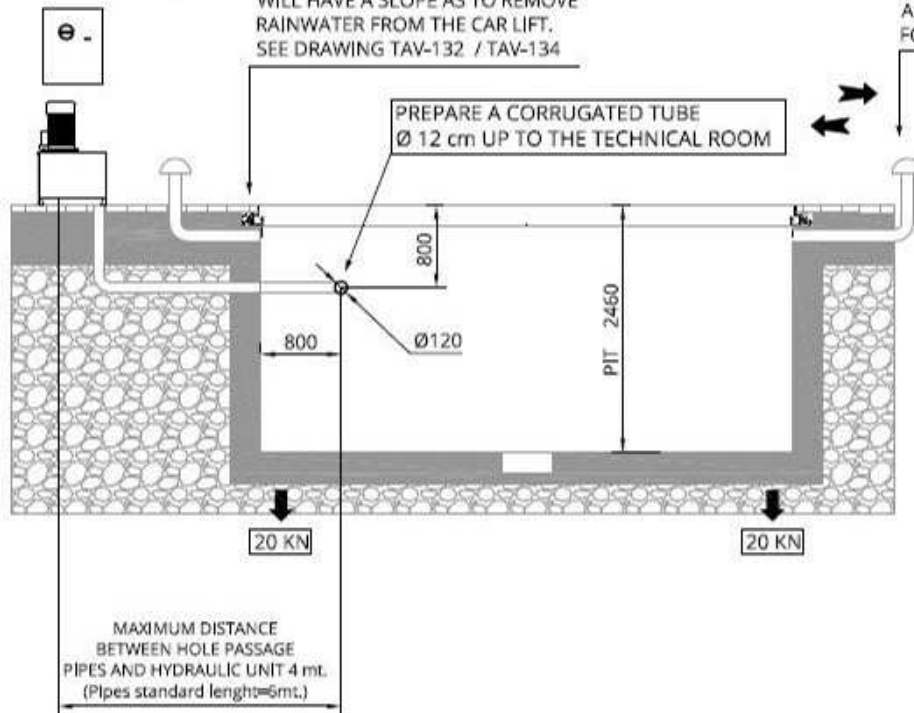


STANDARD MODEL

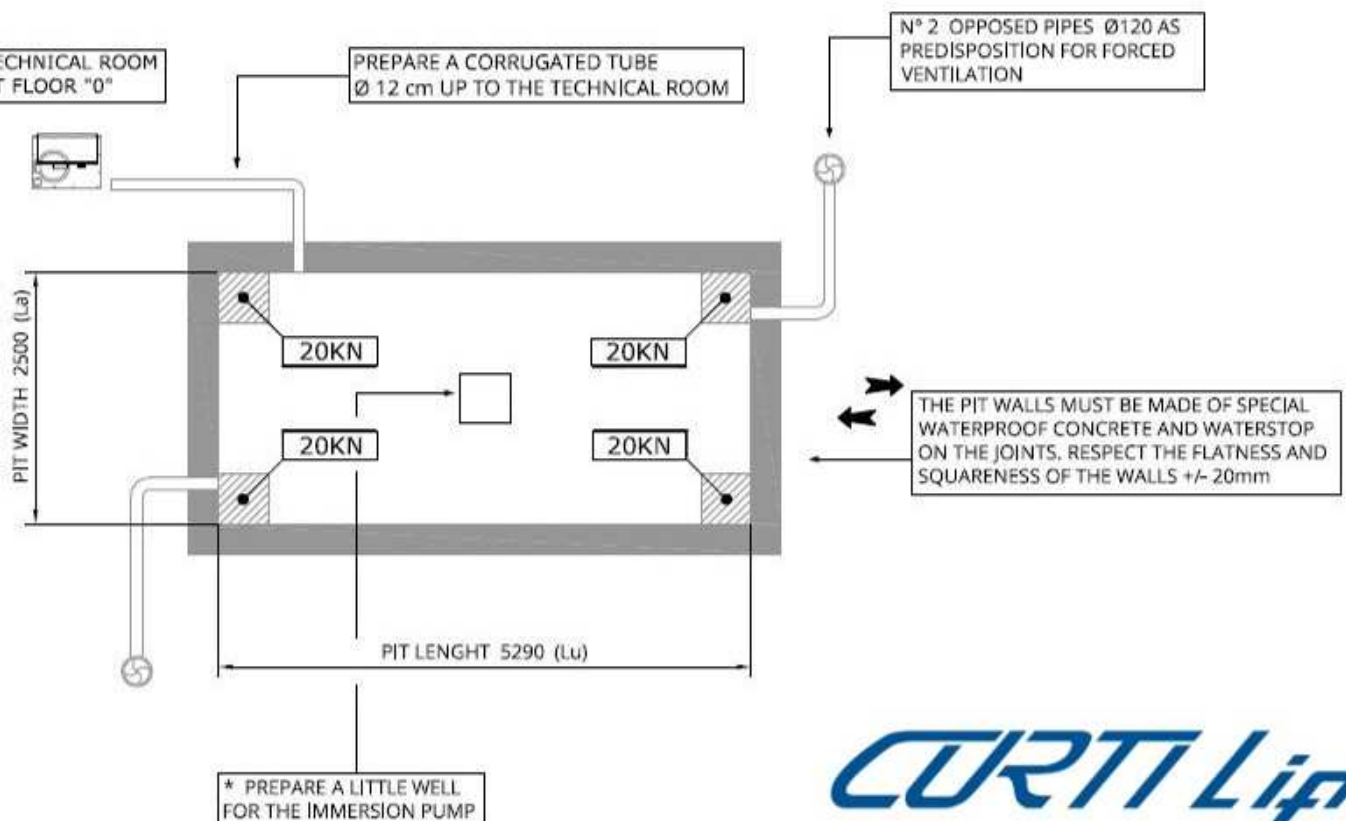
Capacity: 2500 Kg

Stroke : Max 2060

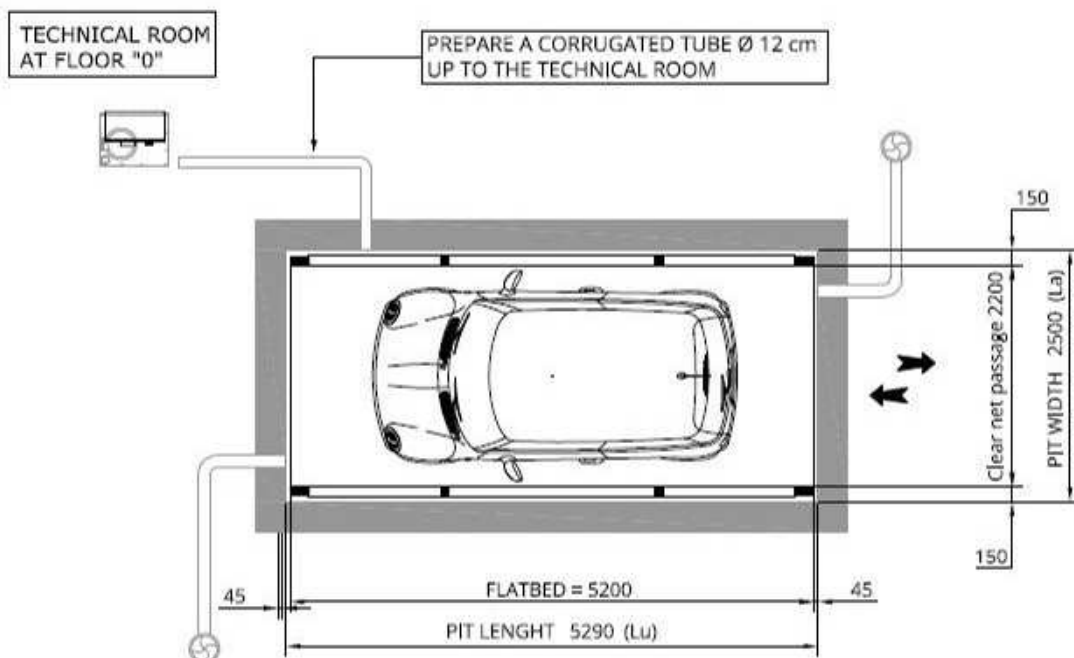
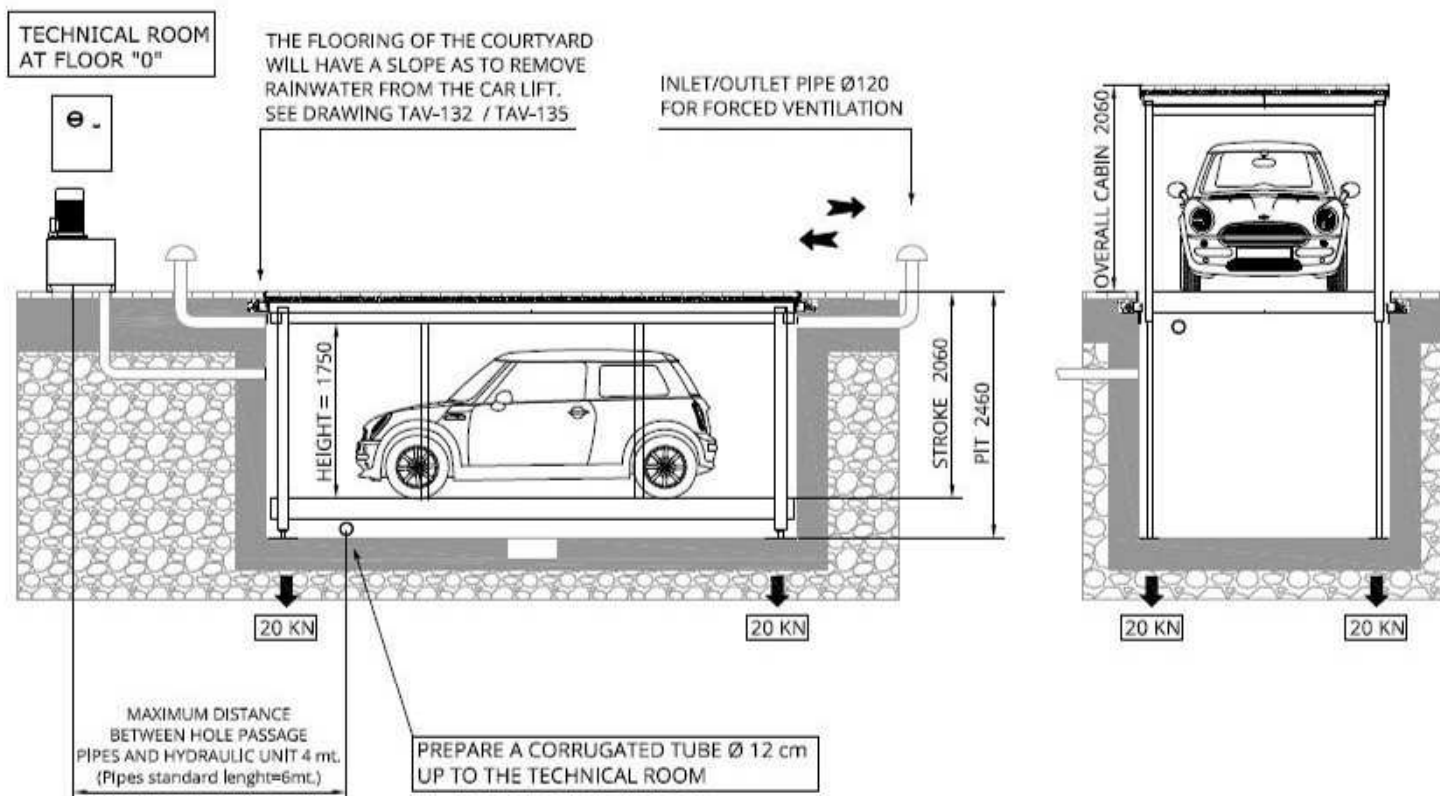
TECHNICAL ROOM
AT FLOOR "0"



TECHNICAL ROOM
AT FLOOR "0"



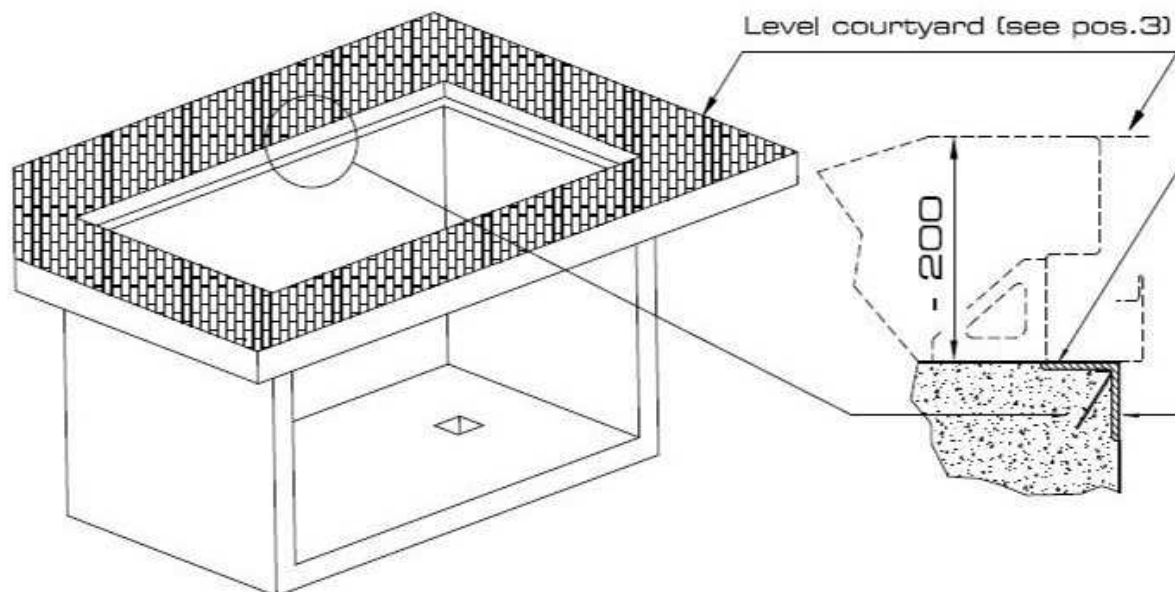
CURT Lift



PREPARE A LINE PH+N+T (GND) or 3PH+N+E, PROVIDE AUTOMATIC MAGNETOTHERMIC BREAKER CURVE "C" WITH DIFFERENTIAL, Id = 0.3A

Motor	Tension-functioning	Speed CM / sec	Starter	Suggested switch*	Rated current	Current starter
3 kW	220 V - 1Ph	2,2	Direct	2x16A id= 0,3	15	45
	380 V - 3Ph	2,2	Direct	4x16A id= 0,3	5	15
4 kW	220 V - 3Ph	3,2	Direct	3x20A id= 0,3	16	50
	380 V - 3Ph	3,2	Direct	4x16A id= 0,3	8	25

CURT Lift

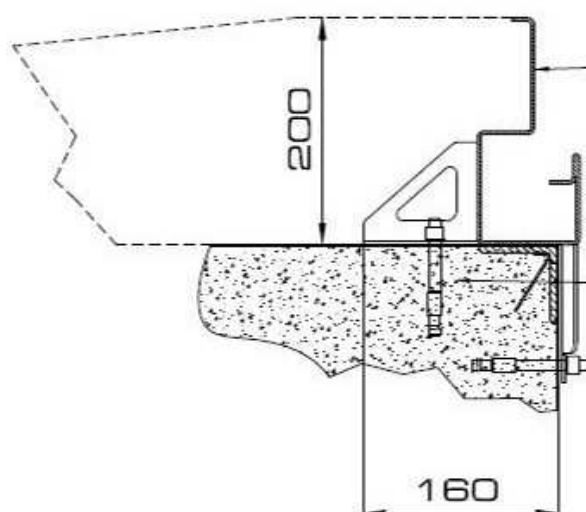


Pos. 1

* Location of duct perimeter at -200 to courtyard level

* On the 2 long sides prepare an angular galvanized steel profile 80x8 on the indicated quota taking care of flatness

Pos. 2



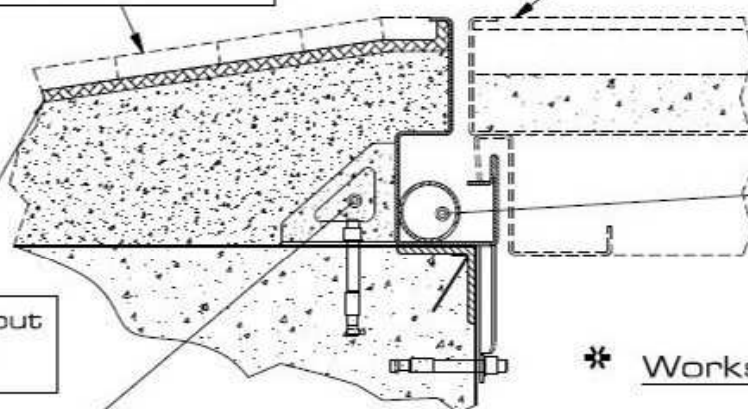
Perimetral duct with border for the containment of the paving yard, see TAV-134

Fixing the channel through heavy anchors

The flooring of the courtyard must have a slope sufficient to remove rainwater from the car lifts

Flooring car lift's hat, see TAV-135

Pos. 3



Before flooring put a waterproofing membrane

Filling with concrete for fixing the cabin

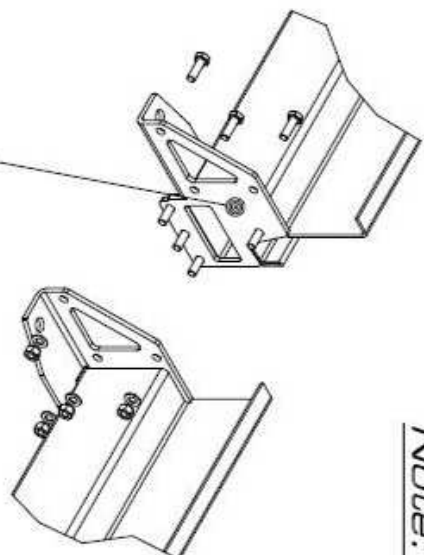
* Water drainage to be connected to the sewerage system

* Works at customer expenses

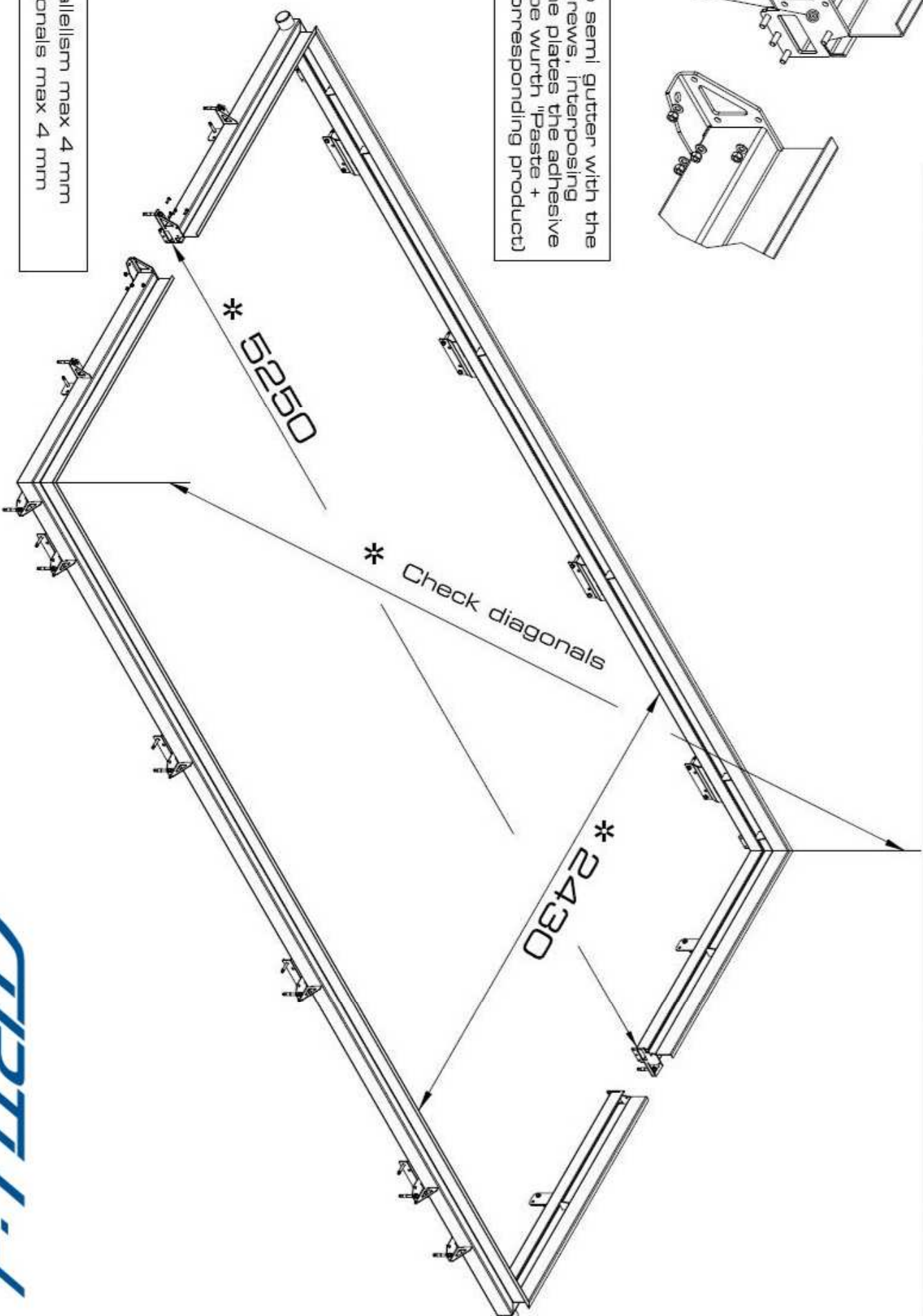
STANDARD MODEL

CURT Lift

Note: before laying, assemble the channel as per the following instructions



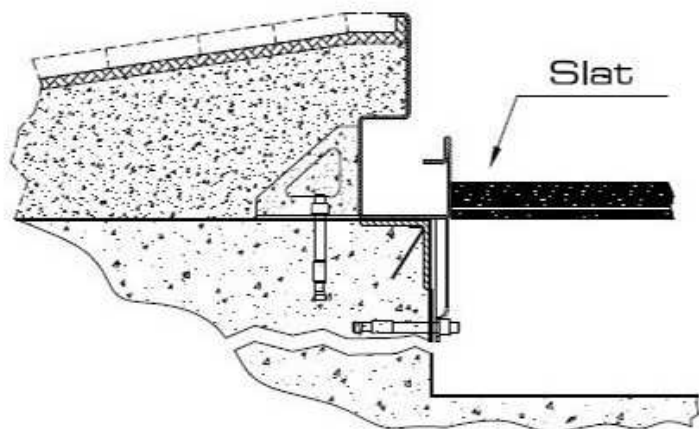
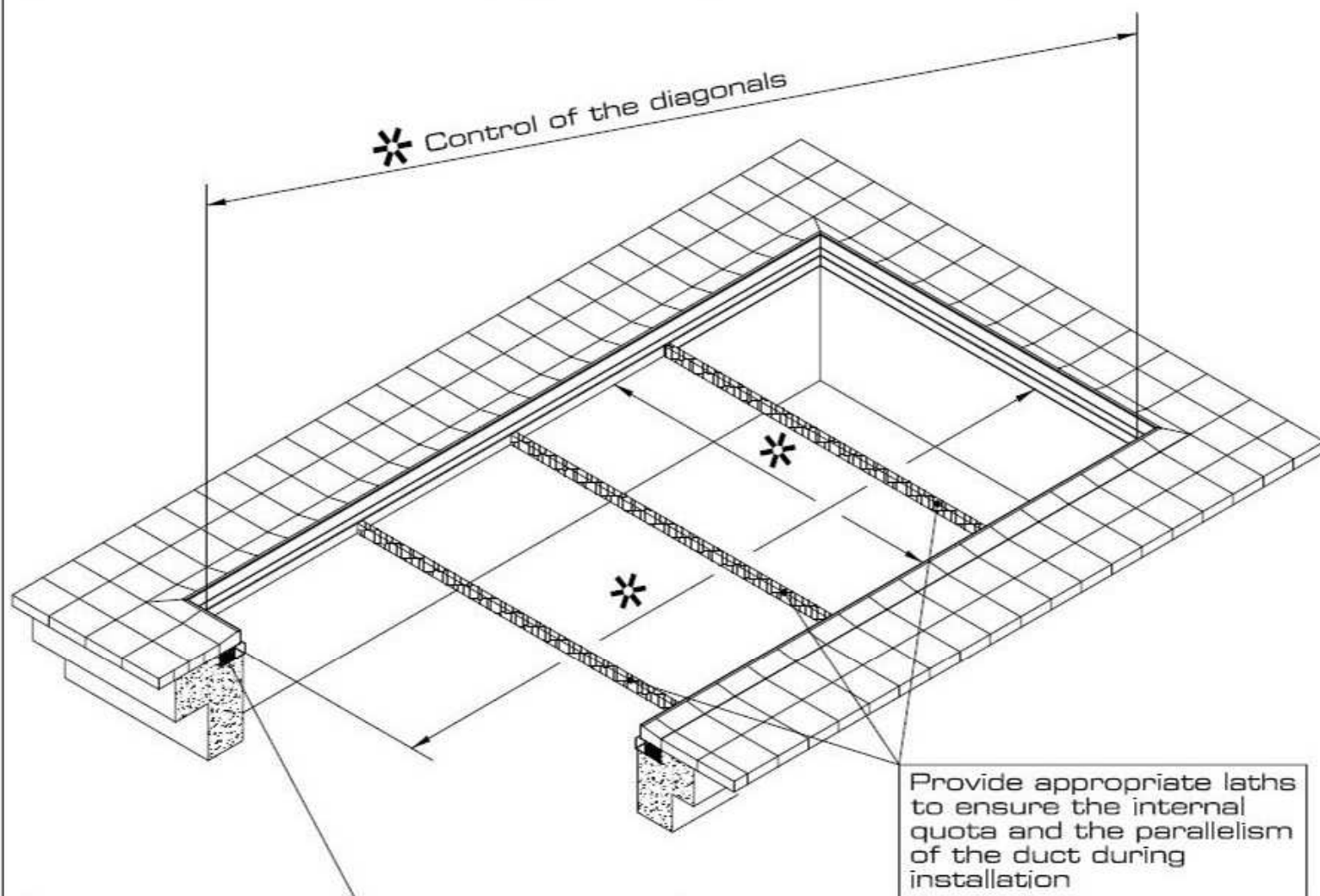
Fix the two semi gutter with the supplied screws, interposing between the plates the adhesive sealant (type wurth "Paste + seals" or corresponding product)



- * Error parallelism max 4 mm
- * Error diagonals max 4 mm

CURTILIFT

Instructions for the laying of the perimetral duct



See drawing. n° TAV - 103

Place the perimetral duct keeping it centered with the pit respecting the flatness and superior predefined level.

See drawings. n° TAV-132

Pos. 1 - 2 - 3

When fixing the duct ensure that the quotas of the two diagonals and the parallelism fall into the error Maximum capacity of 4mm

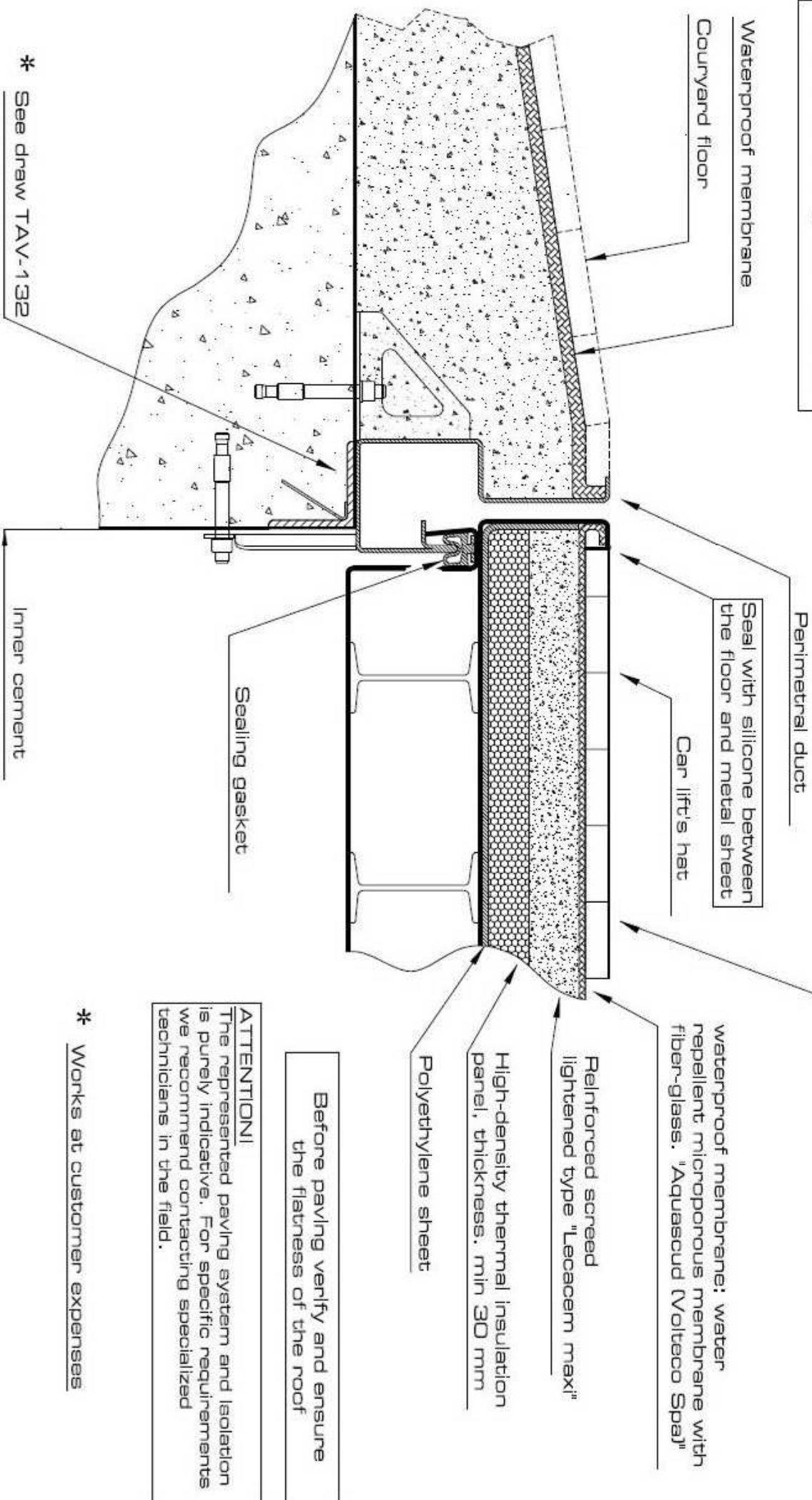
See drawing. TAV - 133

* Error on parallellism max 4 mm

* Error on diagonal max 4 mm

CURTI Lift

The flooring of the courtyard must have a slope sufficient to remove rainwater from the car lifts. See drawing nr. TAV-132



CURT Lift